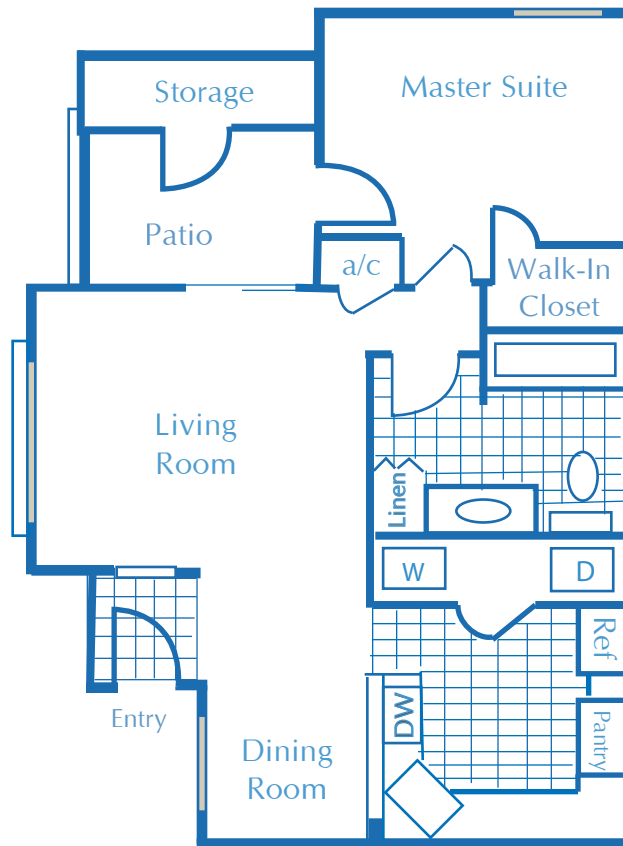


**1 Bedroom**

**1 Bath**

**780 Square Feet**

**Starting at \$735**



## INTERIOR FEATURES

- **SCENIC LAKE VIEWS**
- **FULLY APPOINTED KITCHEN**
- **DECORATIVE CERAMIC TILE FOYER**
- **GAS FIREPLACE IN SELECT HOMES**
- **LARGE, PRIVATE BALCONIES OR PATIOS**
- **SPACIOUS STORAGE**
- **WALK-IN CLOSETS**
- **VAULTED CEILINGS**
- **QUALIFIED PETS WELCOME**

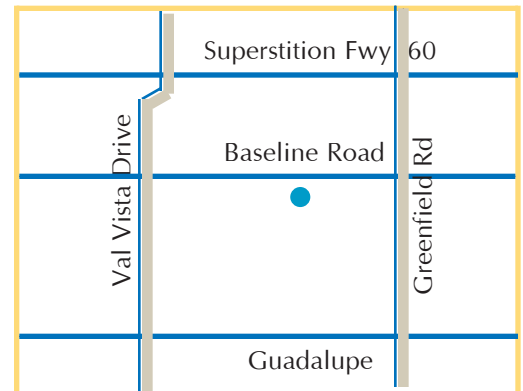
## RECREATIONAL FEATURES

- **24-HOUR FITNESS CENTER**
- **EXECUTIVE BUSINESS CENTER**
- **BBQ GRILLS**
- **ADJACENT TO SHOPPING AND RESTAURANTS**
- **ACCESS TO VAL VISTA LAKES MASTER-PLANNED COMMUNITY**

**MON - SUN 8:00 AM-5:00 PM**

**24 HOUR LEASING PHONE NO. 602.348.9500**

**PRICES SUBJECT TO CHANGE WITHOUT NOTICE**



**SERENA SHORES**  
**4101 EAST BASELINE ROAD**  
**GILBERT, ARIZONA 85234**

**PHONE: 480.557.5500**

**FAX: 480.557.5590**

**WWW.SERENASHORES.COM**