

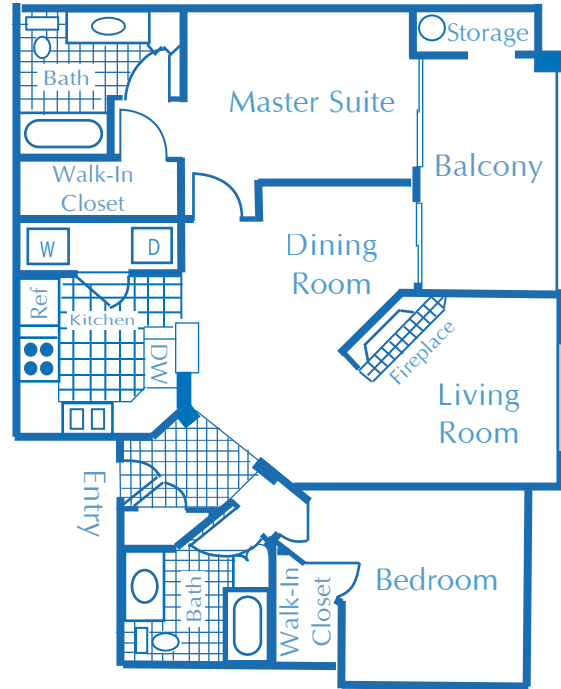
# Serena Shores

**2 Bedroom**

**2 Bath**

**1,105 Square Feet**

**Starting at \$925**



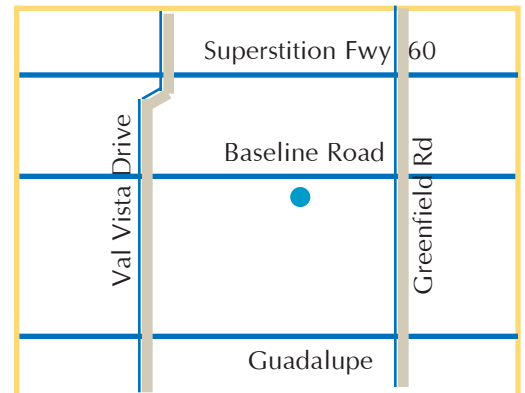
## INTERIOR FEATURES

- **SCENIC LAKE VIEWS**
- **FULLY APPOINTED KITCHEN**
- **DECORATIVE CERAMIC TILE FOYER**
- **GAS FIREPLACE IN SELECT HOMES**
- **LARGE, PRIVATE BALCONIES OR PATIOS**
- **SPACIOUS STORAGE**
- **WALK-IN CLOSETS**
- **VAULTED CEILINGS**
- **QUALIFIED PETS WELCOME**

## RECREATIONAL FEATURES

- **24-HOUR FITNESS CENTER**
- **EXECUTIVE BUSINESS CENTER**
- **BBQ GRILLS**
- **ADJACENT TO SHOPPING AND RESTAURANTS**
- **ACCESS TO VAL VISTA LAKES MASTER-PLANNED COMMUNITY**

**MON - SUN 8:00 AM - 5:00 PM**



**PRICES SUBJECT TO CHANGE WITHOUT NOTICE**

**SERENA SHORES**  
**4101 EAST BASELINE ROAD**  
**GILBERT, ARIZONA 85234**

**PHONE: 480.557.5500**  
**FAX: 480.557.5590**  
**WWW.SERENASHORES.COM**